

# THE BULLETIN

NOVEMBER 2024  
VOLUME 101  
NUMBER 11

Thank you Dr. Macksood Aftab for a successful year as  
President of GCMS



Welcome Dr. Ethiraj Raj, GCMS  
President 2025

Multi-County Webinar March 19th, 2025 Via Zoom  
E-cigarette & Novel Tobacco  
Product Education for the Healthcare Provider

Medicare Advantage Part D Formulary  
Changes for 2025



*Organized Medicine's Leading Edge*

*THE BULLETIN is published monthly by:  
The Genesee County Medical Society*

**GCMS OFFICERS 2024**

Ethiraj Raj, MD, President

Macksood Aftab MD, Immediate Past Pres.

Rama Rao, MD, Treasurer

**MSMS OFFICERS 2024**

John Waters, MD-Treasurer

**DISTRICT DIRECTOR VI**

Nita Kulkarni, MD

**DELEGATES**

Macksood Aftab, DO

Paul Kocheril, MD

Bobby Mukkamala, MD

Rama Rao, MD

Edward Christy, MD

**ALTERNATE DELEGATES**

Dr. Khalid Ahmed

Dr. Qazi Azher

Dr. John Hebert

Dr. Sunil Kaushal

**OTHER BOARD MEMBERS**

Michael Giacalone, Jr., MD

Gary Johnson, MD

Elmahdi Saeed, MD

John Waters, MD

Varsha Moudgal, MD

Alison Kinning, MD

Mary Marshall, MD

Ali Mohammad, MD

**EXECUTIVE DIRECTOR**

David Hoff, MA, CCP

**EXECUTIVE ASSISTANT**

Melissa Keller

**NOVEMBER 2024 VOLUME 101, NUMBER 11**

# THE BULLETIN

READ BY 96% OF GCMS MEMBERS

## FEATURE ARTICLES

Multi County Webinar	28
GCMS Alliance	41
COVID-19 Resources	44
Safe Haven: Physician and Provider Well Being Program	50
Commit To Fit	51

## REGULARS

GCMS Meetings	4
President/Executive Director's Message	5

**Our Vision**

That the Genesee County Medical Society maintain its position as the premier medical society by advocating on behalf of its physician members and patients.

**Our Mission**

The mission of the Genesee County Medical Society is leadership, advocacy, education, and service on behalf of its members and their patients.

**PLEASE NOTE**

The GCMS Nominating Committee seeks input from members for nominations for the GCMS Presidential Citation for Lifetime Community Service. The Committee would like to be made aware of candidates for consideration.

**THE BULLETIN**

Published by the Genesee County Medical Society Publication Office

4438 Oak Bridge Drive, Suite B, Flint, Michigan 48532

Phone (810) 733-9923

Buy subscription \$60 per year. Member subscription included with Society dues. Contributions to **THE BULLETIN** are always welcome. Forward news extracts or material of interest to the staff before the 1st of the month. All statements or comments in **THE BULLETIN** are the statements or opinions of the writers and are not necessarily the opinion of the Genesee County Medical Society .

# Experience the **RMI** difference!

## CASH PRICING

**HIGH DEDUCTIBLE?  
NO PROBLEM.**

SCAN THE QR CODE TO ACCESS OUR  
TIME OF SERVICE PRICE SHEET



### Women's Services

- 3D UltimateMamm
- Rapid Breast MRI
- Breast Ultrasound
- 4D Diagnostic Breast MRI
- Breast Biopsy
- Contrast Enhanced Spectral Mammography (CESM)
- Breast Cancer (BRCA) Gene Testing



### Services

- Bone Densitometry DEXA
- Computed Tomography (CT)
- CT Lung Cancer Screening
- Coronary CT Angiography
- Drainage and Injections
- Fluoroscopy
- Interventional Pain Management
- MRI
- Nuclear Medicine
- PET/CT
- Ultrasound
- Vascular Access and Intervention
- X-Ray

## Schedule a **RMI** Exam Today!

**6 Offices in Mid-Michigan**

**2 Oakland County Offices**

**1 Wayne County Office**



**Genesee/Lapeer Area  
(810) 732-1919**

**Royal Oak Area  
(248) 543-7226**

**Novi Area  
(248) 536-0410**

**Southgate Area  
(734) 281-6600**

**Flint • Davison • Fenton • Grand Blanc • Lapeer • Novi • Royal Oak • Southgate**

**Evening and weekend appointments available!**



**Practice Managers**

January 30th 9:00 2024

9:00 A.M.

@ GCMS

4438 Oakbridge Dr Ste B, Flint 48532

**Medical Society Foundation Board Meeting**

January 15th, 2025

6:00 p.m.

**Board of Directors**

January 28, 2025

6:00 P.M.

**Physician and Legislative Forum Meeting**

February 3rd, 2025

8:00 A.M.

**\*All meetings are via Zoom unless otherwise noted**

*Announcement*

GCMS members now entitled to a 15% discount on automobile and homeowners insurance.

For details, contact:

**POTTER & ROOSE  
INSURANCE**

**810-767-8590**

Providers of insurance for the GCMS & its members for 50 years.

906 Mott Foundation Bld., Flint MI 48502

*Your*  
**HEALTH CARE LAW FIRM**



Wachler & Associates represents healthcare providers, suppliers, and other individuals in Michigan and nationally in all areas of health care law, including:

- **Provider Contracting**
- **RAC, Medicare, Medicaid and Commercial Payor Audits**
- **Billing and Reimbursement**
- **Stark Law, Anti-Kickback Statute, and Fraud & Abuse Compliance**
- **Licensure, Staff Privilege and Credentialing**
- **Physician and Physician Group Issues**
- **Corporate and Transactional Matters**
- **Regulatory Compliance**
- **Healthcare Litigation**
- **Healthcare Investigations**
- **Fraud and False Claims Defense**
- **Provider Participation/Termination Matters**
- **HIPAA and HITECH Compliance**



SERVING HEALTHCARE PROVIDERS FOR OVER 30 YEARS

248.544.0888 • [wachler.com](http://wachler.com)

# ***A MESSAGE FROM THE PRESIDENT & EXECUTIVE DIRECTOR***

## GCMS President's Ball 2024

The 2024 Genesee County Medical Society President's Ball was held on November 2, 2024, at the Sloan Museum of Discovery. The Sloan Museum in the Flint Cultural Center, has hosted the President's Ball two years in a row.

The 2024 President's Ball was held in the formal exhibit room of the Sloan Museum. The beautiful exhibit room was so exquisitely decorated by Dr. Edward Christy and his wife Kantha.

This year, the President's Ball had over 100 attendees from all different medical specialties. The catering was provided by Shibam restaurant in Flushing, the food was excellent! Custom cakes were prepared and beautifully displayed prior to dessert.

A silent auction was a new addition to the Ball for 2024. Many unique items were available to bid on: sports memorabilia, jewelry, alcohol, even a signed guitar by Taylor Swift. Items that were sold, help sustain GCMS financially.

Dr. Mary Marshall was the big winner of the Sovita gift basket giveaway. GCMS would like to thank Sovita Credit Union for sponsorship of the 2024 GCMS President's Ball!

Past Genesee County Medical Society President, Dr. Raymond Rudoni (2013) installed Dr. Ethiraj Raj as the new GCMS president for. Dr. Raj will serve a one-year term as GCMS President.

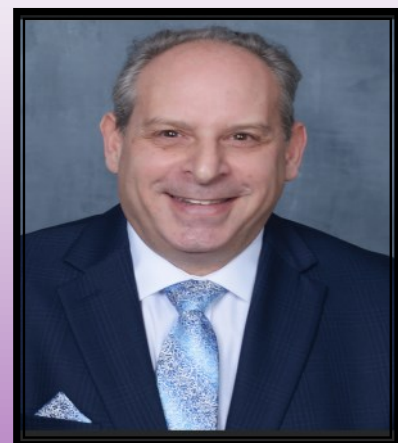
The Genesee County Medical Society would like to congratulate president, Dr. Macksood Aftab. He filled his role as GCMS president so effectively and gracefully helping navigate GCMS into a stable and financially sound organization.

I have enjoyed the time spent with Dr. Aftab throughout the year and gained a friend for life. It is always bittersweet this time of year, I am sad to see Dr. Macksood Aftab leave the presidency after working so closely throughout the year. However, I am excited to begin a new one-year journey with Dr. Ethiraj Raj.

The Genesee County would like to thank Dr. Macksood Aftab for a job well done!!



***DR. EHTIRAJ RAJ, MD***



***DAVID HOFF, MA, CCP***

*GCMS/GCMSA 2024*

*PRESIDENT'S BALL*

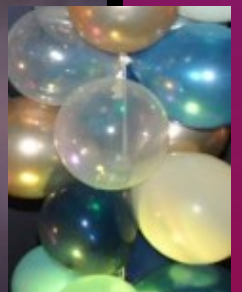
*"RESTORING HEALTH, REVIVING FLINT"*





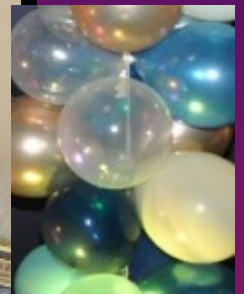




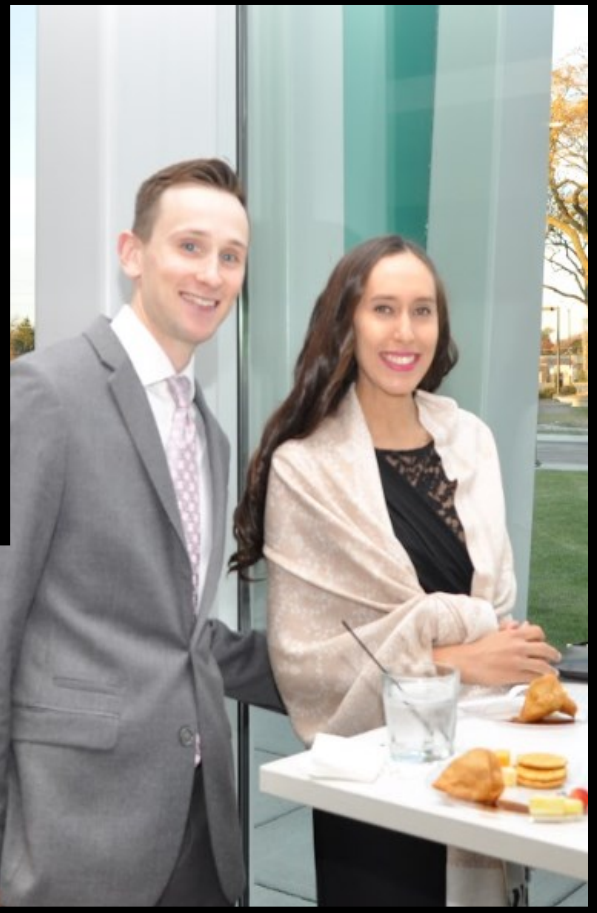


















**GCMS PRESIDENT'S BALL 2024**

Photo by: [www.BlackTieProductions.com](http://www.BlackTieProductions.com)











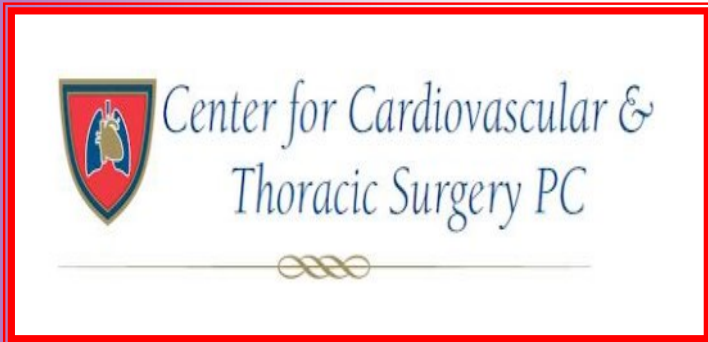


*See you next  
year....*

*Thank You* Sponsors...



*GCMS & GCMSA*



## ***SPECIAL THANKS TO PMC...***

**Professional Medical Corporation is a proud sponsor of the Genesee County Medical Society 2024 President's Ball!**

PMC serves as a vehicle for physicians to be part of a larger, clinically-integrated organization working together on health care opportunities. We also assist our members with achieving Patient-Centered Medical Home (PCMH) designation and maximizing health care incentive payments for PCP's and Specialists. PMC is the largest independent Physician Organization in Genesee County.

**2425 S. Linden Road • Suite B • Flint, MI 48532  
(517) 999-8008**

**PMC**  
Professional Medical Corporation

[www.pmcpo.com](http://www.pmcpo.com)





*Thank you to ...*

*Dr Macksood Aftab & Nalia Aftab*

*Dr. Bobby Mukkamala*

*Dr. Nita Kulkarni*

*Dr. John Waters*

*Dr. Rama Rao in Memory of Dr. Venkat Rao*

*Dr. Suresh Anne & Family*

*Hurley Foundation*

*Genesee Health Plan*

*Genesee County Free Medical Clinic*

*For your generous donations...*



# PROTECTING YOU. YOUR FAMILY. YOUR LIFE.



MSMS Physicians Insurance Agency's licensed agents can help physicians with all their insurance needs – for business, employees and families. We are ready to assist you in protecting your profession.

## **Protecting You & Your Team**

### **INDIVIDUAL AND GROUP COVERAGES**

- Dental Insurance
- Vision Insurance
- Short Term and Long-Term Disability Insurance
- Life Insurance
- Accidental Death and Dismemberment

### **MEDICAL COVERAGE OPTIONS**

- HMO/PPO/POS Health Plans
- Health Savings Accounts (HSAs)
- Health Reimbursement Arrangements (HRAs)
- Wellness Reward Promoting Healthy Living
- Medicare Supplemental
- GeoBlue Travel Medical and International Health
- COBRA related services for groups over 20 at no cost to the group

## **Protecting your Professional Advice**

### **MEDICAL MALPRACTICE**

- Exclusive benefits for MSMS members
- Program discount of 5% for qualified members
- Claims free credit up to 25%
- Tribute Plan recognizes doctors for their loyalty and commitment to the practice of good medicine

## **Protecting You**

### **PERSONAL LINES**

- Auto Insurance
- Homeowners Insurance
- Renters insurance
- Umbrella
- Motorcycle
- Recreational Vehicles

### **PROTECTING YOUR PRACTICE**

- Cyber Liability Insurance
- Workers Compensation Insurance
- Business Owners Insurance (BOP)
- Directors and Officers Liability Insurance
- Employment Practices Liability Insurance (EPLI)
- Commercial General Liability
- Errors and Omissions (E&O)

## **GET PROTECTED!**

**Call:** Toll-Free 877-PIA-ASK-US

**Visit:** [msmsinsurance.org](https://www.msmsinsurance.org)

**Email:** [msms@msmsinsurance.org](mailto:msms@msmsinsurance.org)



MSMS PHYSICIANS INSURANCE AGENCY, PO BOX 950, EAST LANSING, MI 48826



2337 Stonebridge Dr., Building F, Flint, MI 48532

Phone 810-733-6600

Fax 810-733-0262

 fb.com/completewa

 kendall@completewa.com

Securities offered through Cambridge Investment Research Inc., a broker/dealer, member FINRA/SIPC. Investment Advisor services through Cambridge Investment Research Advisors Inc., a Registered Investment Advisor. Cambridge and Complete Wealth Advisors are not affiliated.

Thinking about sponsoring for next years

President's Ball? Just click the link below for more information.

The word "Sponsors" is written in a purple, stylized font where the letters are composed of small dots or pixels.

A blue rounded rectangular button with the word "CLICK" in white, uppercase letters. A white hand cursor icon is pointing at the right side of the button.

*GCMS & GCMSA WOULD LIKE TO THANK EVERYONE FOR ALL OF YOUR SUPPORT THIS YEAR!*





# GENESEE COUNTY MEDICAL SOCIETY

Join us for our Second  
Multi-County Webinar  
*Featuring*  
E-cigarette and Novel Tobacco  
Product Education  
for the  
Healthcare Provider

**Cost:**  
No cost for GCMS Members  
(included in membership)  
Non-members \$50 payable in advance

**Registration:**  
[executivedirector@gcms.org](mailto:executivedirector@gcms.org)

**Wednesday, March 19, 2025**  
**7:00 pm - 9:00 pm | Zoom Webinar**



**Bara Zuhaili, MD**



**Brittany Tayler, MD**

**OBJECTIVES:**

1. E-cigarette and Novel Tobacco Product Education for the Healthcare Provider due to their ingredients and components relating to the developing adolescent brain
2. Tobacco usage trends and risk factors
3. Different approaches to addressing tobacco use and cessation treatments for tobacco use disorder in adolescents and adults
4. Review and evaluate methods used to combat vaping in adolescents

*Proudly Presented in Partnership With:*



**Help is  
Here**

**GHS**  
Genesee HEALTH SYSTEM



**Begin Services  
Today:**

1040 W. Bristol Road  
Flint, MI 48507

Monday – Friday  
8 A.M. – 5 P.M.

**(810) 257-3740**

TTY: (810) 232-6310

**24 HOUR CRISIS LINE**

7 days a week, 24 hours a day

**(810) 257-3740**

TTY: (810) 232-6310

**CUSTOMER SERVICES**

Monday – Friday 8 A.M. – 5 P.M.

**(810) 257-3705**

TTY: (810) 257-1346

**BEHAVIORAL HEALTH  
URGENT CARE**

422 W. 4th Avenue • Flint, MI 48503

**(810) 496-5500**

TTY: (810) 232-6310

**Walk-In Services:**

7 days a week - extended hours

**Video Chat Services:**

7 days a week, 24 hours a day

**Mobile Crisis Services:**

7 days a week, 24 hours a day

[www.genhs.org](http://www.genhs.org)



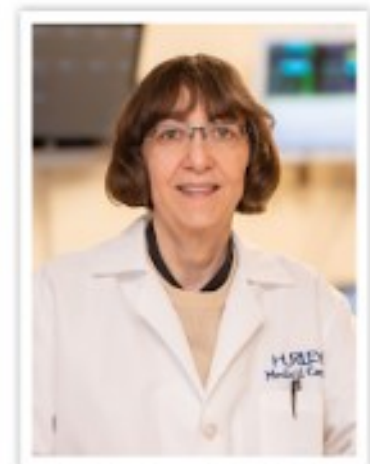
# Welcome back Dr. Ivana Vettrai.

Dr. Vettrai brings over 35 years of experience, dedication and clinical excellence back to our Maternal Fetal Medicine team.

We strive to offer high risk patients the most comprehensive, all-inclusive services available in one office setting, including:

- **Advanced OB Sonography**
- **Fetal Echocardiography**
- **Non-Invasive Prenatal Genetic Testing**
- **Amniocentesis**
- **Cerclage Placement**
- **Chorionic Villus Sampling**
- **Pregnancy Diabetes Co-Management**
- **Consultations with Neonatology & Pediatric Specialists**

If you have a high-risk patient, please call Dr. Vettrai's office at 810.262.6894. [HurleyMC.com](http://HurleyMC.com)



Ivana M Vettrai, MD, MBA, FACOG  
Maternal Fetal Medicine

**MATERNAL FETAL MEDICINE**

**HURLEY**

# HURLEY IS MID-MICHIGAN'S DESTINATION FOR Specialized Surgical Care

## Comprehensive Surgical Group & Hernia Center

### Team of Experts

Our acute care surgeons are board-certified and treat a broad spectrum of complexities, including:

- Acute Care /Burn Surgery
- Adult & Pediatric Trauma and Surgical Critical Care
- Bariatric Surgery
- Emergency Surgery
- Hernia & Gallbladder Surgery
- Robotic Surgery
- Reflux Surgery



Adam Howell, DO



Patrick R. Beer, DO

To Refer a Patient to Drs. Howell or Beer, Call 810.262.6024



Kristoffer Wong DO, FACOS



Gul Sachwani-Daswani DO, FACOS



Gavin A. Huber, DO

To Refer a Patient to Drs. Wong, Sachwani or Huber, Call 810.262.6555

## Hurley Neurological Center

- Spine & Spinal Cord Injury
- Spine Tumor Surgery
- Cerebral Aneurysm
- Cerebral & Spinal AVM
- Cerebral Vascular Lesions
- Carotid Artery Stenosis
- Acoustic Tumors

### Cerebrovascular Neurosurgery

- Cerebral Aneurysms
- Intracerebral Hemorrhage

### Neurosurgical Oncology

- Brain Tumors & Brain Cancer

### Skull Base Surgery and Tumors



Christian Bowers, MD



Johnny B. Delashaw Jr., MD



Marc Moisi, MD

To Refer a Patient to the Neurological Center, Call 810.262.7030

## Plastic, Reconstructive, Hand & Micro-Vascular Surgery Center

### Limb Salvage & Reconstruction and Peripheral Nerve Surgery

- Targeted Muscle Reinnervation
- Limb Saving Microsurgeries
- Hand & Wrist Surgery

### Cancer Reconstruction

- Breast Reconstruction
- Lymphatic Microsurgery

### Trauma & Burn Reconstruction

- Craniofacial Reconstruction
- Reconstruction of Complex Hand
- Scar Release

### Cosmetic Surgeries

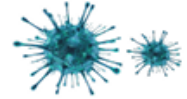
- Breast Surgeries
- Facial Cosmetic Surgeries
- Body Contouring



Ihab R. Saab, MD

To Refer a Patient to Dr. Saab, Call 810.262.8360

# Measles Preparedness Toolkit



Genesee County Health Department created a measles preparedness toolkit. The health care providers guide to in-office testing and prevention guidelines include information regarding:

## Toolkit Contents:

- Infection control and prevention
- Post-exposure prophylaxis
- How to report cases to the health department
- Tips for phone screening in your office
- Best practices for infection prevention
- Testing, procedures, and reporting assistance
- Sources/helpful links to fact sheets and more

Email [jherman@geneseecountymi.gov](mailto:jherman@geneseecountymi.gov) to request an electronic toolkit, or download it directly from the Genesee County Health Department website using the link and QR code below.

Measles is a highly contagious, acute viral illness that begins with fever, cough, runny nose, and conjunctivitis lasting 2-4 days prior to rash onset. The rash typically occurs 3-5 days after symptoms begin and appears first on the face and spreads down the body.

The fact that 5.9% of school-aged children in Genesee County have vaccination waivers, coupled with 28% of eligible children being unvaccinated, puts us at risk of a measles outbreak.

Strongly recommend that eligible patients get vaccinated. If you don't offer vaccinations, advise them to make an appointment with the Genesee County Health Department or, for those over age 3, to visit their local pharmacy.

Website: [www.geneseecountymi.gov](http://www.geneseecountymi.gov)

## Contact Us

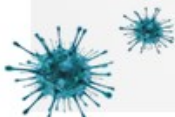
**Genesee County Health Department:  
Communicable Disease Department**

**Phone:** 810-257-1017

**Fax:** 810-257-3247

**Email:** [GCHD-CD@geneseecountymi.gov](mailto:GCHD-CD@geneseecountymi.gov)

Scan the QR code for provider resources, the measles preparedness toolkit, and more



GENESEEE COUNTY  
HEALTH DEPARTMENT



## MSMS REIMBURSEMENT ADVOCATE ALERT



### Upcoming 2025 Medicare Advantage, Part D formulary Changes

Changes to BCBSM and BCN's 2025 drug formularies may require health care providers to prescribe alternative medications to some of the MPB, BCNA or Prescription Blue PDP individual plan members, starting January 1, 2025.

To comply with federal government constraints and Part D redesign provisions expected in 2025, BCBSM and BCN are adjusting the formulary and utilization management requirements. BCBSM and BCN collaborated with physicians and pharmacists to develop a comprehensive formulary strategy by considering safety, efficacy, and cost.

### BCBSM Working with Homeward Health for Medicare Plus Blue Members in U.P.

BCBSM is working with Homeward Health to expand access to care for MPB members in Michigan's Upper Peninsula. This solution started October 1, 2024.

Homeward focuses heavily on health care provider collaboration and communication, and its goal is to supplement the services provided by primary care physicians to improve patients' health. Homeward's mission and business model are aligned to address the challenges that are unique to patients and providers in rural communities.

## Osteopathic Physician (DO) Licensure Requirements

Each osteopathic physician is required to accumulate 150 hours of continuing education in activities approved by the board during the 3 years immediately preceding the application for renewal of which a minimum of 60 hours of the required 150 hours must be earned through Category 1 programs. Following are other license requirements for:

### Controlled Substance Licenses:

#### Opioids and Other Controlled Substances Awareness Training Standards for Prescribers and Dispensers of Controlled Substances

This is a one-time training that is separate from continuing education for an individual seeking a controlled substance license or who is licensed to prescribe or dispense controlled substances.

Licenseses that prescribe or dispense controlled substances who renewed in 2019 must complete training by January 2023; renewals for 2020 by 2024, renewals for 2021 by 2025. Beginning in September 2019, completion of the training is a requirement for initial licensure.

Training content must cover all of the following topics:

- ◆ Use of opioids and other controlled substances.
- ◆ Integration of treatments.
- ◆ Alternative treatments for pain management.
- ◆ Counseling patients on the effects and risks associated with using opioids and other controlled substances.
- ◆ The stigma of addiction.
- ◆ Utilizing the Michigan Automated Prescription System (MAPS).
- ◆ State and federal laws regarding prescribing and dispensing controlled substances.
- ◆ Security features and proper disposal requirements for prescriptions.

### For Medical Licenses:

#### Training Standards for Identifying Victims of Human Trafficking

This is a one-time training that is separate from continuing education. Licensees renewing for 2017 must complete training by renewal in 2020; renewals for 2018 by 2021, and renewals for 2019 by 2022. Beginning in 2021, completion of the training is a requirement for initial licensure.

Training content shall cover all of the following:

- ◆ Understanding the types and venues of human trafficking in this state or the United States.
- ◆ Identifying victims of human trafficking in health care settings.
- ◆ Identifying the warning signs of human trafficking in health care settings for adults and minors.
- ◆ Resources for reporting the suspected victims of human trafficking.

#### Education on Pain and Symptom Management

A minimum of 3 hours of continuing education every 3-year relicense cycle. At least 1 of the 3 hours must include controlled substances prescribing.

Continuing education hours may include, but are not limited to, any of the following areas:

- ◆ Public health burden of pain.
- ◆ Ethics and health policy related to pain.
- ◆ Michigan pain and controlled substance laws.
- ◆ Pain definitions.
- ◆ Basic sciences related to pain including pharmacology.
- ◆ Clinical sciences related to pain.
- ◆ Specific pain conditions.
- ◆ Clinical physician communication related to pain.
- ◆ Management of pain, including evaluation and treatment and nonpharmacological and pharmacological management.
- ◆ Ensuring quality pain care and controlled substances prescribing.
- ◆ Michigan programs and resources relevant to pain.

### Medical Ethics

A minimum of one-hour of continuing education every 3-year relicense cycle.

#### Implicit Bias

A minimum of 3 hours every 3-year relicense cycle. New licensees need 2 hours within the 5 years immediately preceding.

Renewals from June 1, 2022 – May 31, 2023, need 1 hour; renewals from June 1, 2023 – May 31, 2024, need 2 hours; renewals from June 1, 2024 – May 31, 2025, need 3 hours. Then after, every 3-year renewal cycle will need to report 3 hours. (Any hours after June 2021 can be used.)

Training must include strategies to reduce disparities in access to and delivery of health care services and the administration of pre- and post-test implicit bias assessments.

Acceptable modalities of training include asynchronous teleconference or webinars, in addition to live activities and live webinars.

Training content must include, but is not limited to, 1 or more of the following topics:

- ◆ Information on implicit bias, equitable access to health care, serving a diverse population, diversity and inclusion initiatives, and cultural sensitivity.
- ◆ Strategies to remedy the negative impact of implicit bias by recognizing and understanding how it impacts perception, judgment, and actions that may result in inequitable decision making, failure to effectively communicate, and result in barriers and disparities in the access to and delivery of health care services.
- ◆ The historical basis and present consequences of implicit biases based on an individual's characteristics.
- ◆ Discussion of current research on implicit bias in the access to and delivery of health care services.

## Medical Doctor (MD) Licensure Requirements

Each medical doctor is required to complete 150 hours of continuing education in courses or programs approved by the board of which a minimum 75 hours of the required 150 hours must be earned in courses or programs designated as Category 1 programs. Other license requirements are listed here:

### Controlled Substance Licenses

#### Opioids and Other Controlled Substances Awareness Training Standards for Prescribers and Dispensers of Controlled Substances

This is a one-time training that is separate from continuing education for an individual seeking a controlled substance license or who is licensed to prescribe or dispense controlled substances.

Licensees that prescribe or dispense controlled substances who renewed in 2019 must complete training by January 2023; renewals for 2020 by 2024, renewals for 2021 by 2025. Beginning in September 2019, completion of the training is a requirement for initial licensure.

Training content must cover all of the following topics:

- ◆ Use of opioids and other controlled substances.
- ◆ Integration of treatments.
- ◆ Alternative treatments for pain management.
- ◆ Counseling patients on the effects and risks associated with using opioids and other controlled substances.
- ◆ The stigma of addiction.
- ◆ Utilizing the Michigan Automated Prescription System (MAPS).
- ◆ State and federal laws regarding prescribing and dispensing controlled substances.
- ◆ Security features and proper disposal requirements for prescriptions.

### Medical Licenses

#### Training Standards for Identifying Victims of Human Trafficking

A one-time training, separate from continuing education. Licensees renewing for 2017 must complete training by renewal in 2020; renewals for 2018 by 2021, and renewals for 2019 by 2022. Beginning in 2021, completion of the training is a requirement for initial licensure. Training content shall cover all of the following:

- ◆ Understanding the types and venues of human trafficking in this state or the United States.
- ◆ Identifying victims of human trafficking in health care settings.
- ◆ Identifying the warning signs of human trafficking in health care settings for adults and minors.
- ◆ Resources for reporting the suspected victims of human trafficking.

#### Education on Pain and Symptom Management

A minimum of 3 hours of continuing education every 3-year relicensure cycle. At least 1 of the 3 hours must include controlled substances prescribing. Continuing education hours may include, but are not limited to, any of the following areas:

- ◆ Public health burden of pain.
- ◆ Ethics and health policy related to pain.
- ◆ Michigan pain and controlled substance laws.
- ◆ Pain definitions.
- ◆ Basic sciences related to pain including pharmacology.
- ◆ Clinical sciences related to pain.
- ◆ Specific pain conditions.
- ◆ Clinical physician communication related to pain.
- ◆ Management of pain, including evaluation and treatment and nonpharmacological and pharmacological management.
- ◆ Ensuring quality pain care and controlled substances prescribing.
- ◆ Michigan programs and resources relevant to pain.

### Medical Ethics

A minimum of one-hour of continuing education every 3-year relicensure cycle.

#### Implicit Bias

A minimum of 3 hours every 3-year relicensure cycle. New licensees need 2 hours within the 5 years immediately preceding.

Renewals from June 1, 2022 - May 31, 2023, need 1 hour; renewals from June 1, 2023 - May 31, 2024, need 2 hours; renewals from June 1, 2024 - May 31, 2025, need 3 hours. Then after, every 3-year renewal cycle will need to report 3 hours. (Any hours after June 2021 can be used.)

Training must include strategies to reduce disparities in access to and delivery of health care services and the administration of pre- and post-test implicit bias assessments.

Acceptable modalities of training include asynchronous teleconference or webinars, in addition to live activities and live webinars.

Training content must include, but is not limited to, 1 or more of the following topics:

- ◆ Information on implicit bias, equitable access to health care, serving a diverse population, diversity and inclusion initiatives, and cultural sensitivity.
- ◆ Strategies to remedy the negative impact of implicit bias by recognizing and understanding how it impacts perception, judgment, and actions that may result in inequitable decision making, failure to effectively communicate, and result in barriers and disparities in the access to and delivery of health care services.
- ◆ The historical basis and present consequences of implicit biases based on an individual's characteristics.
- ◆ Discussion of current research on implicit bias in the access to and delivery of health care services.

**ATTENTION**



**ATTENTION: PRACTICE MANAGERS  
AND OFFICE STAFF!**

**Genesee County Medical Society addresses issues of concern  
for medical professionals!**

Please join GCMS and SOVITA in monthly meetings for  
practice managers and office staff of *all member physicians*.

*Please email [executivedirector@gcms.org](mailto:executivedirector@gcms.org) to RSVP,*

***YOU WILL RECEIVE A ZOOM INVITE***

**NEXT MEETING DATE:**

**January 30th, 2024— 9:00 A.M. @ GCMS**

**4438 Oakbridge Dr Ste B, Flint 45532**

***You do not want your Practice Manager to miss out***



# So easy!

New Members can earn up  
to **\$150** just for joining.



Sovita Credit Union is dedicated  
to those who devote their lives to  
education and healthcare  
including their immediate families.



Federally insured  
by NCUA.

**Sovita**<sup>®</sup>  
CREDIT UNION



scan for details

**Become a member:** call 810.720.8300 • visit a branch office • go to [sovitacu.org](https://www.sovitacu.org)

## WHAT CLINICIANS NEED TO KNOW

**L**egislation was signed in April 2022 through the support of the MSMS-initiated and led Health Can't Wait, a coalition with more than 50 healthcare, clinician, and patient advocacy organizations. This legislation puts more control back in the hands of clinicians and patients.

Public Act 60 of 2022 provides prior authorization (PA) reform with the goal of a quicker, more effective, and more transparent process. It does not repeal PA.

All provisions will be fully in effect as of **June 1, 2023**, including major components such as electronic submission and faster timelines.

These reforms apply to health care insurers (and their contracted third-party vendors) and healthcare professionals whose beneficiaries/patients have commercial insurance policies regulated by the Michigan Department of Insurance and Financial Services. **They do not impact Medicaid, Medicare, Medicare Advantage, or self-funded plans.**

Check insurers' provider news, updates, portals, etc. to learn of any new processes related to online submission, appeals, eligibility, and PA requirements related to the law's implementation.

**Please review the key provisions below for additional details and requirements.**

### Electronic Submissions

#### Beginning June 1, 2023:

- Insurers **must provide** an online method through which practitioners can electronically submit PA requests for any benefits requiring PA, including prescription drugs. Facsimiles do not count as an acceptable method.
- Physicians and other health care professionals **must submit** PA requests electronically. The only exception is for a temporary technological or electrical failure.

### Timeliness of Decisions

	Urgent		Non-Urgent	
	Timeframe	Considered Granted	Timeframe	Considered Granted
<b>Beginning June 1, 2023</b>	Acted upon within 72 hours	Insurer fails to act after 72 hours	Within nine (9) calendar days	Insurer fails to act after nine (9) calendar days
<b>After May 1, 2024</b>	Acted upon within 72 hours	Insurer fails to act after 72 hours	Within seven (7) calendar days	Insurer fails to act after seven (7) calendar days
<b>Valid for</b>	A minimum of 60 days or the length of time that's clinically appropriate, whichever is longer			

NOTE: If you are requested to provide additional information, it is important to do so as quickly as possible as the turnaround time noted above will reset and the insurer will be required to make a determination following the receipt of the additional information within the prescribed timelines for urgent or non-urgent requests.

## Review by Peers

Puts conditions on health care practitioners reviewing appeals (e.g., no financial stake in decision, not involved in prior denial, etc.). Any adverse determinations regarding a PA request for a non-pharmacy benefit must be made by a licensed physician and by a physician or pharmacist for a pharmacy benefit. If a denial is appealed, the denial cannot be affirmed unless it has been reviewed by a licensed physician who is board-certified or eligible in the same specialty as the service provided. An exception is allowed if finding such an individual would delay a decision within the required timeframe. In this instance, a physician in a similar general specialty could be utilized.

## Clinical Validity

PA requirements must be based on peer-reviewed clinical review criteria. The criteria must:

- Take into account the needs of atypical patient populations and diagnoses.
- Reflect community standards of care.
- Ensure quality of care and access to needed health care services.
- Be evidence-based criteria.
- Be publicly available free of charge.
- Be sufficiently flexible to allow deviations from norms when justified on a case-by-case basis.
- Be evaluated and updated, if necessary, at least annually.

## Transparency

PA requirements, including amendments, must be publicly and conspicuously posted online within a specified timeline. Insurers are also required to submit an annual report to the Michigan Department of Insurance and Financial Services (DIFS) which must include aggregated trend data related to the insurer's PA practices and experience for the prior plan year. DIFS shall post an annual report with aggregated data by October 1 of each year.

In cases of PA denials, the health care professional must be notified of the reasons for the denial and related evidence-based criteria, their right to appeal, instructions on how to file the appeal, and any other documentation necessary to support the appeal.

## Gold Carding

Insurers are required to adopt a program that promotes the modification of certain PA requirements based on health care professionals' adherence to nationally recognized evidence-based medical guidelines and other quality guidelines.

**Health Can't Wait** is a coalition of patients, physicians, and health care providers dedicated to putting Michigan patients first and ending delays in patients' access to health care:

Allergy and Asthma Network  
Alliance for Patient Access  
AARP Michigan  
American Autoimmune Related Diseases Association  
American Cancer Society  
Cancer Action Network  
American College of Cardiology, Michigan Chapter  
American College of Physicians, Michigan Chapter  
American Diabetes Association  
American Lung Association in MI  
American Medical Association  
APTA Michigan

The Arc Michigan  
Berrien County Medical Society  
Calhoun County Cancer Control Coalition  
Epilepsy Foundation of Michigan  
Genesee County Medical Society  
Hemophilia Foundation of Michigan  
Henry Ford Medical Group  
Huron Valley Physicians Association  
Ingham County Medical Society  
International Myeloma Foundation  
Jackson County Medical Society  
Kent County Medical Society  
Macomb County Medical Society  
MI Academy of Family Physicians

MI Bioscience  
MI Chapter American Academy of Pediatrics  
MI Coalition for Affordable Prescriptions  
MI Council For Maternal & Child Health  
MI Dermatological Society  
MI Podiatric Medical Association  
MI Psychiatric Society  
MI Radiological Society  
MI Rheumatism Society  
MI Society of Anesthesiologists  
MI Society of Eye Physicians and Surgeons  
MI Society of Hematology & Oncology  
MI Society of Interventional Pain Physicians  
MI Society of Pathologists  
MI State Medical Society

Muskegon County Medical Society  
National Marrow Donor Program  
National Multiple Sclerosis Society, Michigan Chapter  
New Day Foundation for Families  
Oakland County Medical Society  
Saginaw County Medical Society  
Sickle Cell Disease Association of America - Michigan Chapter  
St. Clair County Medical Society  
Susan G. Komen  
UNIFIED - HIV Health and Beyond  
Washtenaw County Medical Society  
Wayne County Medical Society of Southeast Michigan

[www.healthcantwait.org](http://www.healthcantwait.org)

From the **AMA** 

**Prior authorization fixes earn majority support in Congress**

A bipartisan House majority has cosponsored legislation to reform prior authorization

[Learn what the bill entails—and what comes next.](#)



**You also may be interested in:**

[What doctors wish patients knew about prior authorization](#)



# GCMSA FOCUS ALLIANCE

Happy November and Happy Thanksgiving!

As the crisp air and falling leaves signal the arrival of the holiday season, I want to take a moment to reflect on the past month and express my gratitude for the opportunities and people who make our community so special.

On November 2nd, I had the distinct honor of speaking about the Genesee County Medical Society Alliance (GCMSA) at the President's Ball. The evening was dedicated to honoring outgoing president Dr. Ahmed and welcoming incoming president Dr. Raj. Sharing this memorable evening with Sabita Tummala, Kathy Cox, and Vijay Sayal made it all the more meaningful.

For decades, the Alliance has worked tirelessly to support the health and well-being of Genesee County. From organizing educational programs and health screenings to supporting community projects, the Alliance has been an integral part of advancing healthcare access and awareness in our community. They bring people together with a common goal: improving the quality of life for all of us. And they do it with passion, dedication, and kindness.

The Alliance's impact is profound, reaching deep into our community through remarkable initiatives. Each year, we proudly support Peace and Unity Day with scholarships for the essay competition, encouraging young people committed to making a difference. We collaborate with our local women's shelter, providing essential resources and a network of support. Through programs like Reach Out and Read, we foster literacy by supplying books to children in need, inspiring a lifelong love of learning. And every spring, the Healing Hands race raises funds to support a free medical clinic, ensuring that essential healthcare is accessible to those who need it most.

Looking ahead, on December 10, we will gather at Warwick Hills Golf and Country Club for a holiday lunch. As part of this event, attendees are encouraged to bring donations for the Genesee County Free Medical Clinic, such as coats, gloves, hats, and scarves. These contributions will help keep our community members warm and supported this winter.

To continue making a meaningful difference, we need your support. We encourage GCMS physicians, spouses, partners, and families to join us in this mission by becoming members of the Alliance. Together, we can amplify our impact and create lasting change.

As we approach Thanksgiving, let us pause to express gratitude for the people and organizations that enrich our lives and strengthen our communities. May this season bring you joy, warmth, and cherished moments with loved ones.

Wishing you a wonderful Thanksgiving!



*Joy-Dawn Hardman, President GCMSA*





**DAVID HOFF**  
CEO

(810) 407-4921  
hoffshealthybooks@gmail.com

hoffshealthybooks.com

Certified QuickBooks  
Online ProAdvisor

- Provide bookkeeping and general ledger entry input for QuickBooks Online.
- Generate income reports as needed.
- Perform budgeting and fixed cost analysis.
- Offer payroll services.
- Provide QuickBooks Online set up and consulting.

## ***Your Membership at Work***

- ◆ GCMS hosts monthly Practice Manager's meeting discussing complicated insurance issues in round table discussions with various insurance companies. If you find on-going insurance issues, please reach out to GCMS staff at [executivedirector@gcms.org](mailto:executivedirector@gcms.org) and we can connect that insurance company representative with our hard working Practice Managers.
- ◆ GCMS staff helped Genesee County residents with contacts, resources and explanations.
- ◆ GCMS Membership Committee has collaborated and has a plan in place to reach out to and meet with various practices in Genesee County. If you have colleagues that are not yet GCMS members, please connect with them!  
\*\*\*\* A flyer of GCMS benefits can be provided to you.

# MSMS Resource Guide



For information on the topics listed here, dial 517/336-plus the four digit extension (unless full number is provided).  
For information on a topic not listed here, call MSMS at 517/337-1351 or 800/352-1351.

**JOIN MSMS**  
Membership  
517-336-5716  
membership@msms.org

## EDUCATION

**Rebecca Blake**  
517-336-5729

[rblake@msms.org](mailto:rblake@msms.org)

## HUMAN RESOURCES

**Jodi Schafer, SPHR, SHRM-SCP**  
517-336-5716

[msms.org/HR](http://msms.org/HR)

## INSURANCE/ MEDICAL, DENTAL, VISION

**Diane Wheelock**  
517-336-7591

[dwheelock@msms.org](mailto:dwheelock@msms.org)

## INSURANCE/LIABILITY

**Julie Ozburn**  
517-899-1457

[jozburn@msms.org](mailto:jozburn@msms.org)

## LEGISLATIVE ADVOCACY

**Josiah Kissling**  
517-336-5737

[jkissling@msms.org](mailto:jkissling@msms.org)

## MEDICAL/ REGULATORY POLICY

**Stacey Hettiger**  
517-336-5766

[shettiger@msms.org](mailto:shettiger@msms.org)

## PHYSICIAN LICENSING

**Brenda Marenich**  
517-336-7580

[bmarenich@msms.org](mailto:bmarenich@msms.org)

## REIMBURSEMENT ADVOCACY

**Stacie Saylor**  
517-336-5722

[ssaylor@msms.org](mailto:ssaylor@msms.org)

Alliance.....	313/408-1359
AMA Delegation.....	5766 or 5788
Annual Scientific Meeting.....	5789
Antitrust Issues.....	5766
Board of Directors.....	5729
Chief Executive Officer.....	5729
Closing a Practice.....	5766
Coding & Billing Questions.....	5722
Continuing Medical Education.....	7580
• Accreditation.....	7580
Contracting Checklists.....	5766
Committees.....	5723
Corporate Compliance.....	5766
County Medical Societies.....	5729
Durable Power of Attorney (to order forms).....	5727
E & M Coding.....	5722
Educational Programs.....	5723
Employed Physicians.....	5716
Government Relations/Advocacy.....	5737
Group Practice Resources.....	5716
Health Care Law.....	5766
Health Information Technology.....	5770
House of Delegates.....	5723
Human Resource.....	5729
Immunizations.....	5770
Information Systems.....	7604
Insurance – Medical, Dental, Vision, Liability.....	877/742-2758
International Medical Graduate Section.....	5723
Managed Care Contracting.....	5766
Medicaid & Medicare • Legislation/Funding.....	5737
• Reimbursement.....	5722
Medical Education.....	5729
Medical Ethic.....	5789
Medical Records Release.....	5766
Medical Student Section.....	5723
Medigram.....	5737
• Advertising.....	5737
• Editor.....	5737
Meeting Registration.....	5789

## Membership

• Account Specialists.....	5716
• Applications.....	5716
• Change of Address.....	5716
• Dues Processing.....	5716
• Retired/Life Benefits.....	5716
Michigan Doctors' PAC.....	5737
MSMS Foundation.....	5723
Organized Medical Staff Section.....	5723
Patient Centered Medical Home.....	5770
Practice Solutions.....	5753
Professional Liability Insurance.....	517/899-1457
Reimbursement Advocate.....	5722
Resident and Fellow Section.....	5723
Risk Management (The Doctors Company).....	517/899-1457
Starting a Practice.....	5766
Third-Party Payer Issues.....	5722
Website.....	5737
Workers' Compensation.....	5722
Young Physician Section.....	5723

## MSMS SUBSIDIARIES & AFFILIATES

MSMS Physicians Insurance Agency..	877/742-2758
Physician Review Organization.....	517/336-1400
Prof. Credential Verification Service..	517/336-1400

## ADDITIONAL IMPORTANT NUMBERS

American Medical Association.....	800/262-3211
American Osteopathic Association..	312/202-8000
Drug Enforcement Agency.....	202/307-1000
Medicaid Provider Inquiry, Medicare Customer Service.....	800/292-2550
MI Board of Medicine.....	517/335-0918
MI Board of Osteopathic Medicine and Surgery.....	517/335-0918
MI Department of Health and Human Services • Local.....	517/373-3740
• Toll free.....	800/292-2550
MI Health Prof. Recovery Corp.....	800/453-3784

## Michigan State Medical Society

PO Box 950 East Lansing, MI 48826 | Membership Fax Line: 517-336-5716

*Please email or call if you have any member benefit questions!*




**CLICK HERE**

**For Daily Genesee County Covid-19 Numbers**

[Coronavirus \(COVID-19\) Data Dashboard for Genesee County](#)

**CLICK HERE**

**For Reporting**



**EMPLOYERS + SCHOOL ADMINISTRATORS:**  
Do you need to report a laboratory-confirmed positive COVID-19 case?  
Click the button to email the Communicable Disease team at [GCHD-CD@gchd.us](mailto:GCHD-CD@gchd.us) or call (810) 257-1017

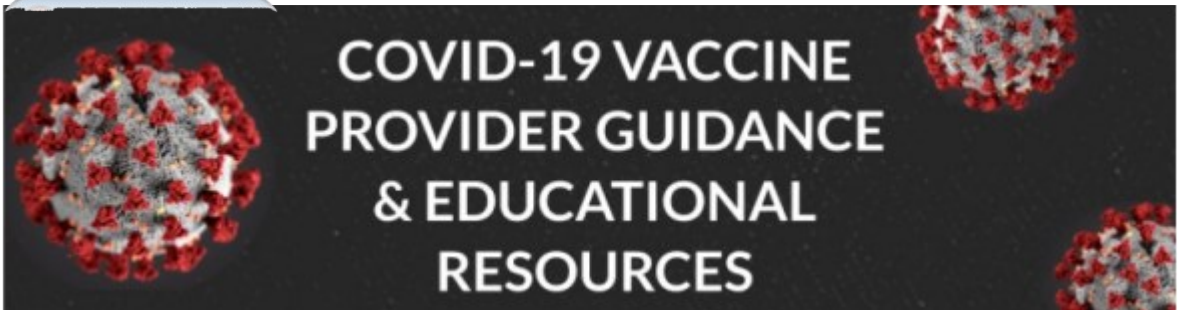
**CLICK HERE**

**For State of Michigan Covid-19 Information**





 [CLICK HERE](#)



**COVID-19 VACCINE  
PROVIDER GUIDANCE  
& EDUCATIONAL  
RESOURCES**

**COVID-19 VACCINE**

The COVID-19 pandemic demonstrates how diseases without vaccines can devastate economic and public health. Vaccines have reduced and, in some cases, eliminated many diseases. In the U.S., there is currently no approved vaccine to prevent COVID-19. MDHHS is working with the CDC and Michigan stakeholders to prepare and plan for when the vaccine is available. The initial draft of our state's plan is now available and will be updated often in the coming months. Visit regularly for the most recent information on the COVID-19 vaccine and Michigan's preparations.

[COVID-19 VACCINE PLAN](#)

 [CLICK HERE](#)

**COVID-19 VACCINE RESOURCES**

**IMMUNIZATIONS DURING COVID-19**

**CDC FAQs**

**PROVIDER GUIDANCE & EDUCATION**

NEW BENEFIT  
FOR  
MEMBERS!

*GCMS can help YOUR PRACTICE  
meet the ADA requirements  
and provide impeccable services to your patients  
at a DISCOUNTED price!*

GCMS is very pleased to announce a relationship with Luna Language Services. Luna offers a number of different virtual options to assist physician offices with language interpretation services. As an added benefit to your GCMS Membership, a discount is now offered to all GCMS members utilizing

**Luna Virtual Language Services.**

Please contact **David Hoff** Executive Director to register your office for discounted services.

*Genesee County Medical Society Members  
receive a discount for language services!*



**Interpreting  
Services**

- On-site Interpreting
- Virtual Interpreting
- Phone Interpreting
- Video Remote Interpreting (VRI)
- Conference & Event Interpreting

**LUNA**  
Language  
Services

To become a GCMS member,  
or to receive details about  
this discounted service

Please contact :

[ExecutiveDirector@GCMS.org](mailto:ExecutiveDirector@GCMS.org)

## Easy Ways to Donate to the Medical Society Foundation:

The Medical Society Foundation is engaged in a Capitol Campaign. The purpose of the Campaign is to grow the corpus to support the charitable activities of the Genesee County Medical Society. Those activities include public and community health, support for the underserved, and wellness initiatives.

To continue its good work, the Medical Society Foundation is asking you to consider leaving a legacy gift to the Foundation. If all, or even a significant portion of our membership left just a small part of our estates to the Foundation, the Foundation could continue helping this community in so many ways, by supporting the Medical Society.

To make a gift, simply use these words:

In your Trust, "Grantor directs Trustee to distribute \_\_\_% of all assets then held in Trust or later added to this Trust to the Medical Society Foundation, to be held in an endowed fund and used in the discretion of its then existing board of directors in furtherance of the purposes of the Foundation."

In your Will, "I give, devise and bequeath \_\_\_% of my Estate to the Medical Society Foundation, to be held in an endowed fund and used in the discretion of its then existing Board of Directors in furtherance of the purposes of the Foundation."

While this is not a subject that is comfortable to broach, it is an opportunity to support the Foundation which supports the Medical Society's charitable activities on behalf of the membership. Please give. You can give via a trust or will. You can give from your IRA. You can give appreciated stock, and you can give cash. Please support the organization which does so much on behalf of the medical community and the patients we serve.



**Don't Forget!**  
Donations are tax deductible!

**Please contact GCMS at 733-9923 or email [executivedirector@gcms.org](mailto:executivedirector@gcms.org)**

# MEDICAL SOCIETY FOUNDATION



Did you know that all donations made to the **Medical Society Foundation** are 100% Tax-deductible? If you are interested in donating, or if you have any further questions, please contact

[executivedirector@gcms.org](mailto:executivedirector@gcms.org) Thank you!







## Do you have an advertising NEED?

- Are you a Physician **and** you are a member of GCMS and you have a new practice in Michigan?
- Do you have a medical practice **and** you are a member of GCMS and your office has relocated?
- Do you have a business that serves Michigan and business slow?

Let Genesee County Medical Society help!

## Genesee County Medical Society Bulletin

(ONLINE MAGAZINE)

**Your ad will be featured in the Genesee County Medical Society monthly bulletin that is provided to 1,500+ viewers. The Bulletin can also be found on the GCMS website, and is also published through Calameo virtual magazine. ([HTTPS://En.Calameo.com/](https://en.calameo.com/))**

1/2-page ad \$195/month

3/4-page ad \$290/month

Full page ad \$350/month

A link to the business website or email can be added for **NO** additional fee.

[Click here](#)

to connect with GCMS, we can provide your advertising needs!



GENESEE COUNTY  
**MEDICAL  
SOCIETY**

\*\*all ads placed by Physicians or Medical Practices must have a GCMS membership.



**safe haven™**  
CONFIDENTIAL SUPPORT

# SAFEHAVEN™

## PHYSICIAN AND PROVIDER WELL BEING PROGRAM

Rediscover meaning, joy, and purpose in medicine.

SafeHaven™ ensures that physicians and health care providers can seek confidential assistance and support for burnout, career fatigue, and mental health reasons.



In-the-moment telephonic support by a licensed counselor, 24/7



Legal and financial consultations and resources, available 24/7



**Peer Coaching**—talk with someone who has walked in your shoes that can help you grow both personally and professionally

- Six sessions per incident
- Physician or provider chooses coach from a panel of coaches



**Counseling**, available in either face-to-face or virtual sessions; addressing stress, relationships, eldercare, grief, and more

- Six sessions per incident
- Available to all extended family members



**WorkLife Concierge**, a virtual assistant to help with every day and special occasion tasks, 24/7



**VITAL WorkLife App**—Mobile access to resources, well being assessments, insights, and more

### RESOURCES FOR YOU AND YOUR FAMILY MEMBERS

SafeHaven™ includes Well Being Resources from VITAL WorkLife—confidential and discreet resources designed to reduce stress and burnout, promote work/life integration and support well being for you and your family.

TO LEARN MORE, VISIT  
[www.MSMS.org/SafeHaven](http://www.MSMS.org/SafeHaven)

To support the needs of physicians and health care providers struggling with stress, burnout, and the effects of COVID-19, the Michigan State Medical Society (MSMS) and VITAL WorkLife have partnered to offer a comprehensive set of well being resources and confidential counseling services for their use, SafeHaven™.



# Commit to Fit

Commit to Fit provides nutrition, physical activity, and healthy food access programming throughout Flint and Genesee County with a focus on disadvantaged communities and a commitment to forging strong relationships with community-based organizations (CBOs) and residents. Its nutrition education combines the SNAP-Ed Fork and the Road and The Learning Kitchen interventions with the Cooking with Kids program, which demonstrates to residents of all ages how to eat healthily on a budget, how to incorporate produce unique to Michigan into their diets, and how small changes in what they eat can make huge differences in their health.

Likewise, Commit to Fit's physical activity education combines the SNAP-Ed Rec-Connect™ intervention with Tai Chi for Arthritis and Fall Prevention classes to introduce residents to a wide variety of enjoyable physical activities for people of all levels of ability and interest. Our health educators encourage participants to be active daily and teach them that even the smallest amounts of consistent physical activity can improve their level of wellness. Commit to Fit also offers three wellness challenges throughout the year where students, businesses, and residents can have fun and win prizes by being more physically active.

Commit to Fit works to increase residents' access to fresh, culturally preferred, healthy, local, and affordable food (or appropriate food) by partnering with the food pantries, food distribution sites, and meal sites that comprise the supplemental and emergency food system in Genesee County. Those organizations, which provide food to our most vulnerable residents at critical times in their lives, receive networking assistance from Commit to Fit that allows them to provide each other with mutual support and resources. This includes the sharing of surplus food, which has the additional benefit of preventing food waste in the community.

Commit to Fit also improves food access by providing all manner of assistance – including grant-based funding and technical support – to CBOs that operate community gardens and urban farms in disadvantaged neighborhoods or at locations that serve them. The produce grown by those organizations is selected based on community needs and helps them provide appropriate food to their neighbors.

One of GFHC's two missions is to improve the health status of its residents. Through the efforts listed above, Commit to Fit meets that challenge by promoting and supporting healthier eating, increased physical activity, and improved access for everyone living, working, learning, and playing in Flint and Genesee County.

This project was funded in whole or in part by the USDA's Supplemental Nutrition Assistance Program Education through the Michigan Department of Health and Human Services and the Michigan Fitness Foundation. This institution is an equal opportunity provider.

For questions or to register for a class, email [commit2fit@flint.org](mailto:commit2fit@flint.org) or call [810-232-2228](tel:810-232-2228)



## Mainstreaming Addiction Treatment Act/Medication Access and Training Expansion Act and Corresponding State Modifications

June 21, 2023

To all controlled substance licensees:

Most practitioners are now aware that Congress has passed the Mainstreaming Addiction Treatment (MAT) Act that removed the federal "DATA 2000" or "DATA-Waiver Program," and the Medication Access and Training Expansion (MATE) Act that established a one-time training on substance use disorder for practitioners who prescribe controlled substances when they obtain or renew their Drug Enforcement Administration (DEA) registration. In light of these changes, which are intended to educate practitioners and reduce barriers to obtaining medications for opioid use disorder (OUD) by eliminating burdens on providers who currently prescribe medications and new providers who wish to treat patients with OUD, the Bureau of Professional Licensing (BPL) would like to convey the following corresponding changes at the state level:

- The new DEA one-time 8-hour training requirement is effective June 27, 2023. Effective on this date, or the date on which the DEA requires the 8-hour training in the event the effective date is delayed, and until further notice, a practitioner required to attend a one-time opioid and controlled substances awareness training by the state's Controlled Substances Rules, may use the 8 hours of training that is accepted by the DEA for their controlled substances registration to also meet the state's required one-time training on opioids and other controlled substances awareness.
- In addition, R 338.3163 that limits prescribing, dispensing and administering a controlled substance to an individual with a substance use disorder will not be enforced by BPL until the rule is either modified or rescinded. This rule limited the circumstances under which a practitioner could treat an individual with substance use disorder, as well as the number of individuals that could be treated. All other laws and rules, both federal and state, must still be followed.

For more information about the elimination of the DATA-Waiver Program, and DEA's 8-hour substance disorder training, please refer to the following websites:

<https://www.samhsa.gov/medications-substance-use-disorders/removal-data-waiver-requirement>

[https://www.deadiversion.usdoj.gov/pubs/docs/MATE\\_training.html](https://www.deadiversion.usdoj.gov/pubs/docs/MATE_training.html)

! [MATE Training Letter Final.pdf \(usdoj.gov\)](#)

Questions may be sent to [BPLHelp@michigan.gov](mailto:BPLHelp@michigan.gov).

Thank you,

Bureau of Professional Licensing  
Licensing Division



GENESEE COUNTY  

---

MEDICAL  
SOCIETY

CONNECT WITH US..

[Genesee County Medical Society \(GCMS\) | Flint MI |  
Facebook](#)



[Wix | LinkedIn](#)



[WWW.GCMS.ORG](http://WWW.GCMS.ORG)

Application Code:

## State and County Medical Society MEMBERSHIP APPLICATION

Join MSMS and your County Medical Society online at [www.joinmsms.org](http://www.joinmsms.org)



- I am in my first year of practice post-residency.
- I am in my second year of practice post-residency.
- I am in my third year of practice post-residency.
- I have moved into Michigan; this is my first year practicing in the state.
- I work 20 hours or less per week.
- I am currently in active military duty.
- I am in full, active practice.
- I am a resident/fellow.

Male  Female

First (legal) Name: \_\_\_\_\_ Middle Name: \_\_\_\_\_ Last Name: \_\_\_\_\_  MD  DO

Nickname or Preferred Form of Legal Name: \_\_\_\_\_ Maiden Name (if applicable) \_\_\_\_\_

Job Title: \_\_\_\_\_

W Phone \_\_\_\_\_ W Fax \_\_\_\_\_ H Phone \_\_\_\_\_ H Fax \_\_\_\_\_

Mobile: \_\_\_\_\_ Email Address \_\_\_\_\_

Office Address  Preferred Mail  Preferred Bill  Preferred Mail and Bill

City: \_\_\_\_\_ State: \_\_\_\_\_ Zip: \_\_\_\_\_

Home Address  Preferred Mail  Preferred Bill  Preferred Mail and Bill

City: \_\_\_\_\_ State: \_\_\_\_\_ Zip: \_\_\_\_\_

\*Please base my county medical society membership on the county of my (if addresses are in different counties):  Office Address  Home Address

\*Birth Date: \_\_\_\_ / \_\_\_\_ / \_\_\_\_ Birth Country \_\_\_\_\_ MI Medical License #: \_\_\_\_\_ ME #: \_\_\_\_\_

Medical School \_\_\_\_\_ Graduation Year: \_\_\_\_\_ ECFMG # (if applicable) \_\_\_\_\_

Residency Program \_\_\_\_\_ Program Completion Year \_\_\_\_\_

Fellowship Program \_\_\_\_\_ Program Completion Year \_\_\_\_\_

Hospital Affiliation \_\_\_\_\_

• Primary Specialty \_\_\_\_\_ Board Certified:  Yes  No

• Secondary Specialty \_\_\_\_\_ Board Certified:  Yes  No

Marital Status:  Single  Married  Divorced Spouse's First Name: \_\_\_\_\_ Spouse's Last Name: \_\_\_\_\_

Is your spouse a physician?:  Yes  No If yes, are they a member of MSMS?:  Yes  No

Within the last five years, have you been convicted of a felony crime?:  Yes  No If "yes," please provide full information: \_\_\_\_\_

Within the last five years, have you been the subject of any disciplinary action by any medical society or hospital staff?:  Yes  No

If "yes," please provide full information: \_\_\_\_\_

I agree to support the County Medical Society Constitution and Bylaws, the Michigan State Medical Society Constitution and Bylaws, and the Principles of Ethics of the American Medical Association as applied by the AMA and the MSMS Judicial Commission.

Signature \_\_\_\_\_ Date: \_\_\_\_\_

County Medical Society Use Only  
Reviewed and Approved by: \_\_\_\_\_